

EXCLUSIVE

Collection 2020

HENLEY
STOVES



Installation Manual

Gemini | Leo | Libra | Vega | Zodiac

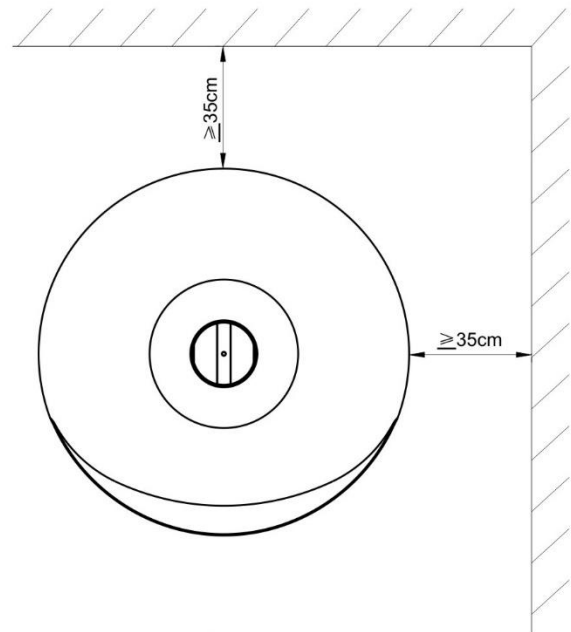
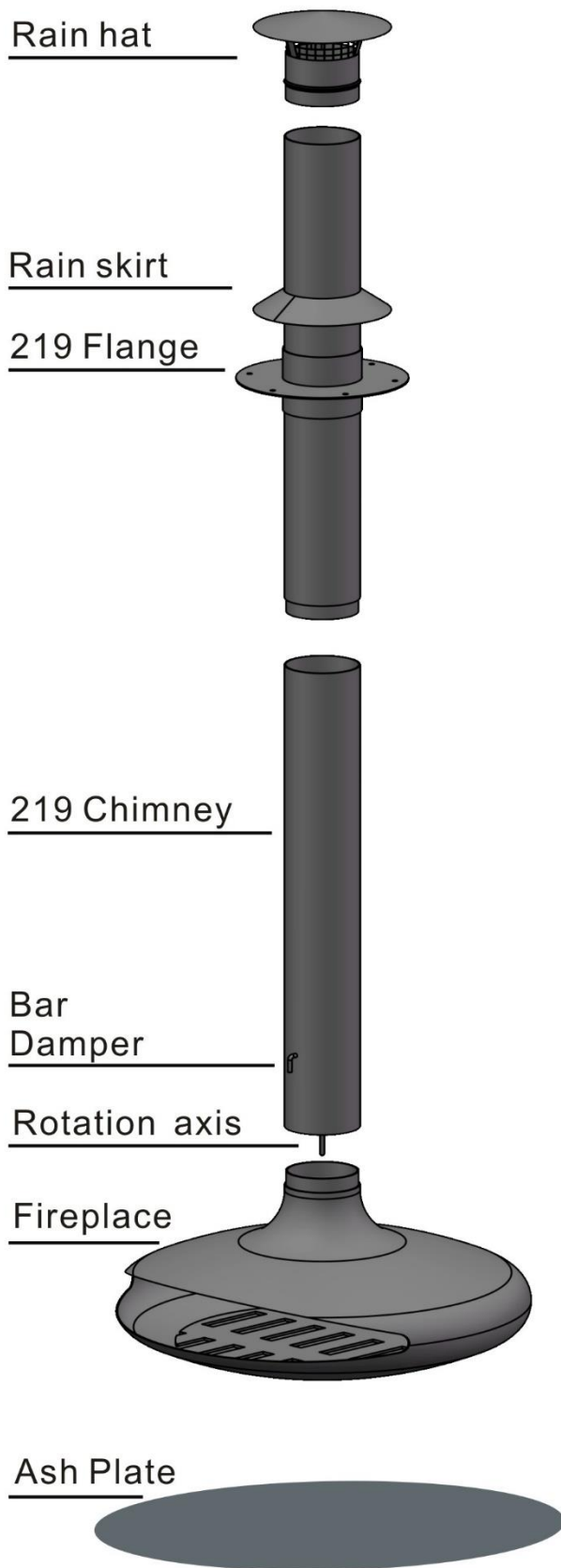


Figure 1

(1) The minimum safe distance of the fireplace body to the wall is not less than 35cm, as shown in Figure 1. If the separation distance is less than 35cm the wall must be protected with a heat insulating material (fire bricks, marble, ceramic tiles, culture stone, glass, metal plates etc).

The separation distance from the underside of the fireplace to ground must be between 35 - 50cm. Please adjust this distance in accordance with the situation on-site. The vertical height of the chimney must not be less than 4m.

An ash plate should be fitted under the fireplace, as shown in the illustration.

(2) Once you have confirmed the location in which your stove is to be installed, drill a 24-28cm diameter opening in the roof to install the flanges. The flange is fixed with M12 expanding bolts (bolt length not less than 10cm). Depending on the installation the flange can be installed on the upper or lower part of the roof as shown in Figures 2 and 3.

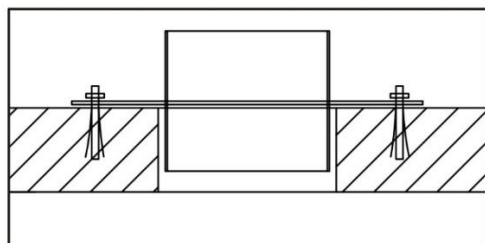


Figure 2

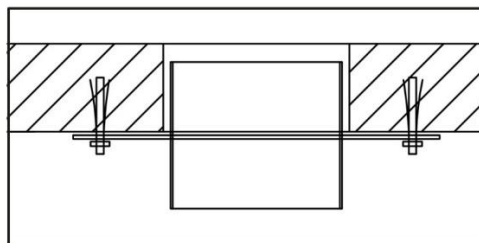


Figure 3

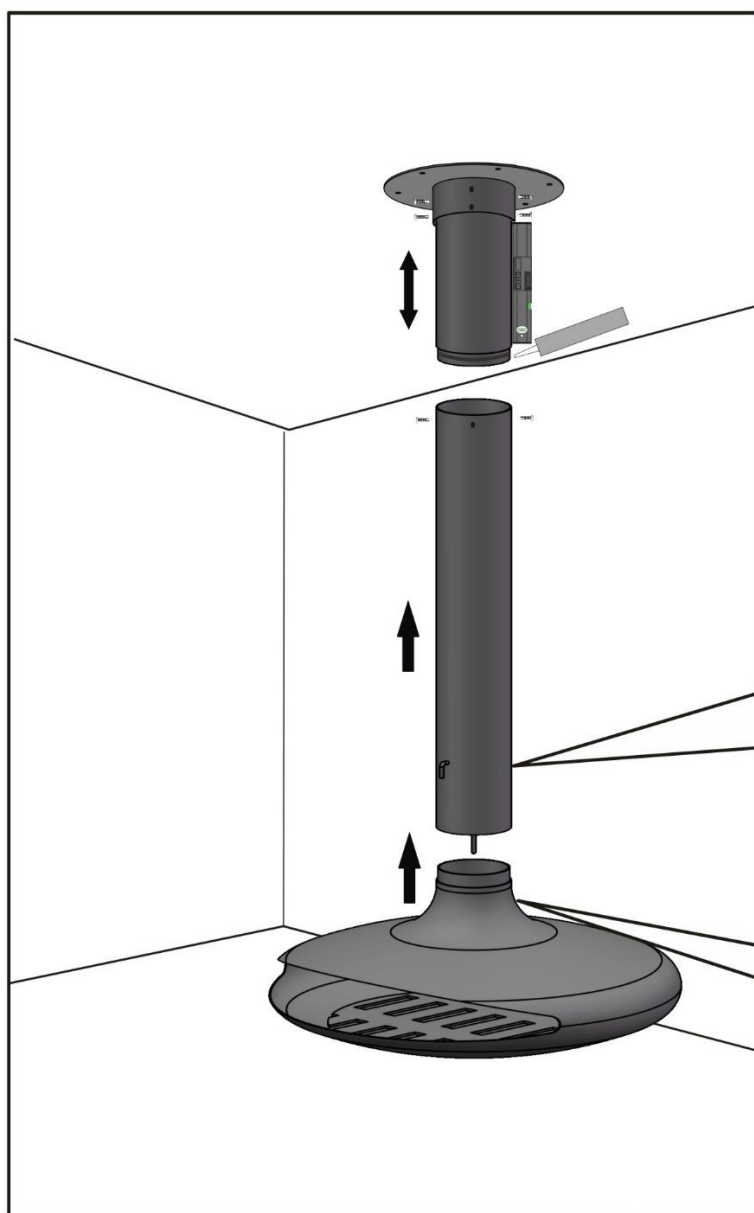


Figure 4

(3) Adjust the chimney to the required length, level the chimney and screw to the flange as shown in Figure 4.

(4) Connect the rotation and axis damper to the bar as shown in Figure 5. Adjust the angle of the damper and tighten the screws.

(5) Seal the joint with high temperature resistant sealant and screw the chimney in place as shown in Figure 4. Fit the fireplace in position and tighten screws as shown in Figure 5. Adjust the position of the fireplace body and confirm that it can be rotated forward and backward.



Figure 5

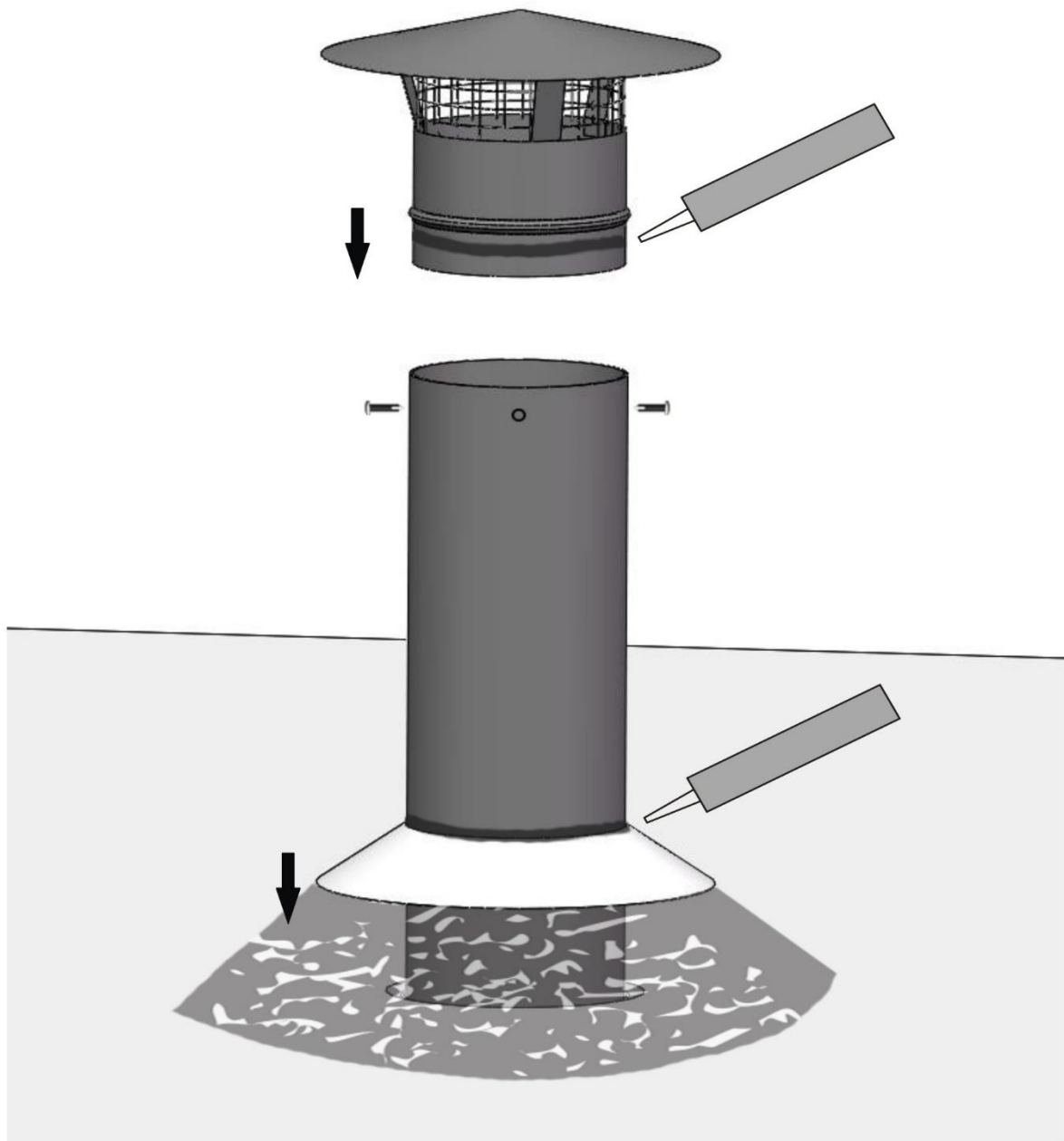


Figure 6

(6) Ensure that your chimney has been installed straight, level and fixed into place. Connect the rain cover and chimney, seal the joint with high temperature resistant sealant and screw into place. The chimney, rain skirt, flange and roof joints should be sealed with cement as shown in Figure 6. Ensure that there are no leaks and check that everything is securely fastened. The installation is complete.

(7) If you have any issues with your installation please consult a professional technician.

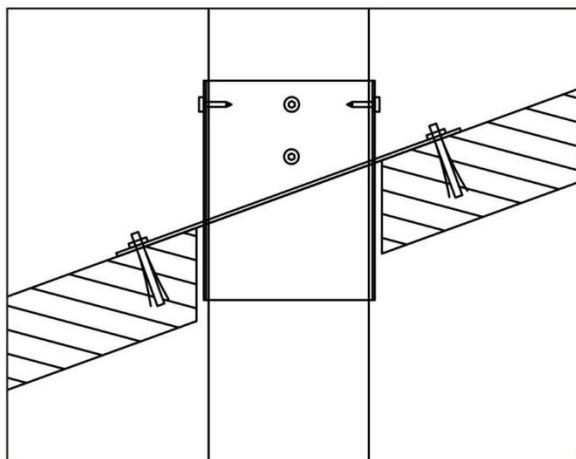


Figure 7

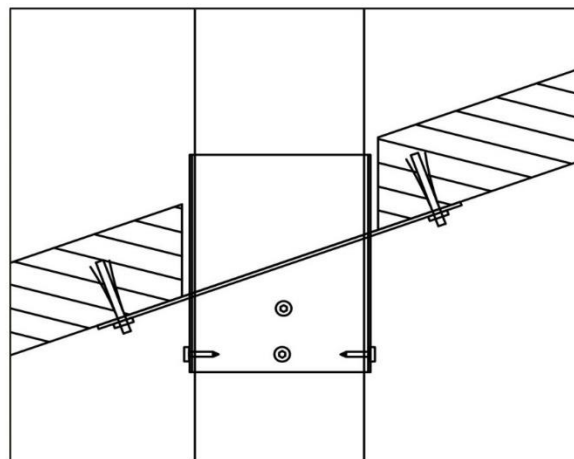


Figure 8

(8) Please refer to Figure 7 and 8 for installing on a pitched roof.

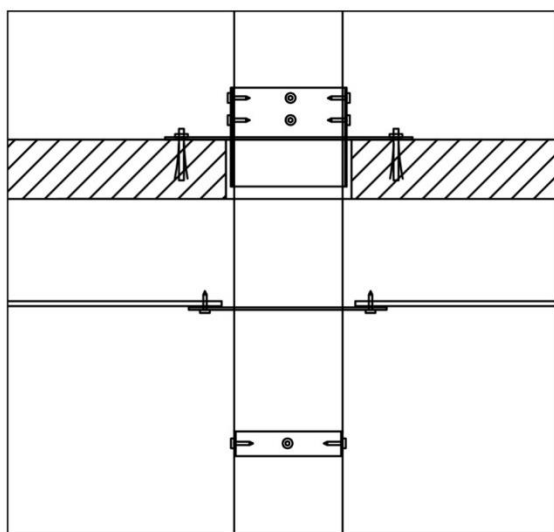
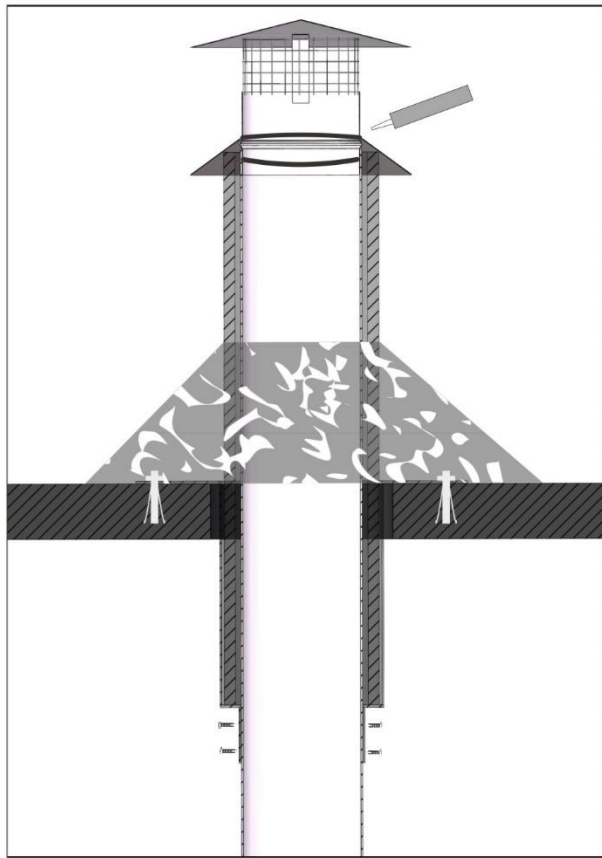


Figure 9

(9) Figure 9 shows the installation in roof with false ceiling.
After completing Steps (1), (2), (3), install the ceiling decoration ring (opening diameter 28cm) as shown and complete Steps (4), (5), (6).



(10) For wooden roofs a double stack installation is required. Flanges and chimneys are installed as per the previous steps and an insulated flue pipe is installed inside the flange. After installing the rain skirt and rain cover, seal the chimney and roof with cement to make watertight.

Figure 10

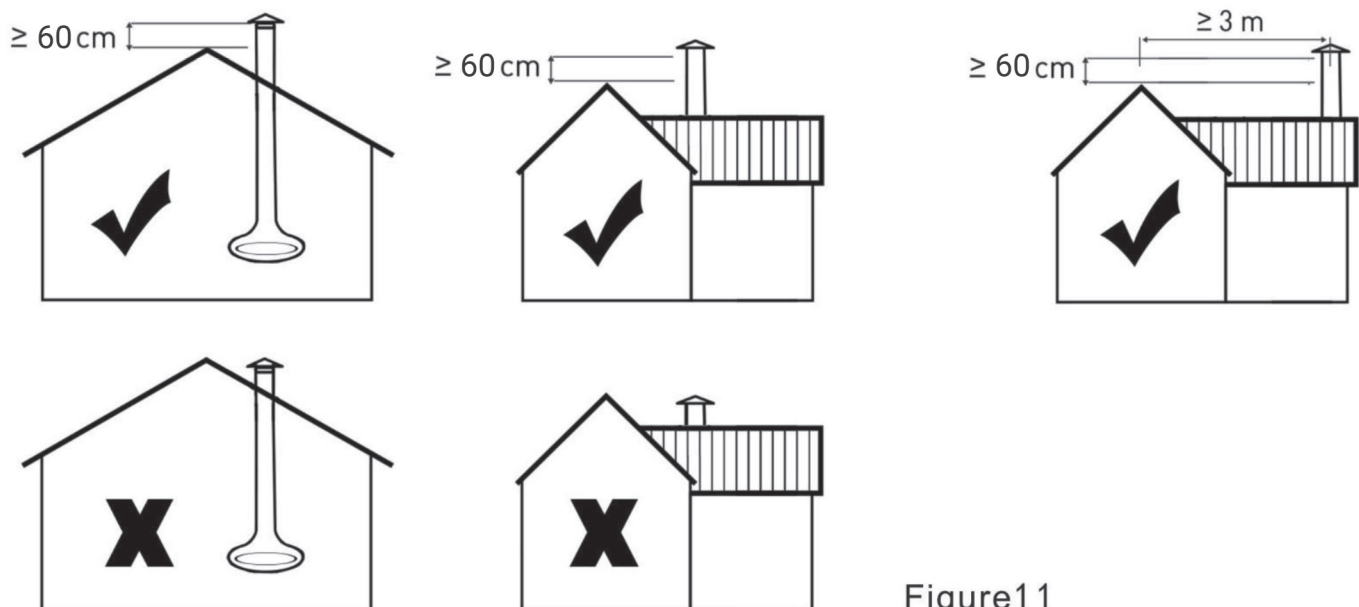


Figure11

⑪ Schematic diagram of fireplace installation location from roof.