

# HENLEY<sup>®</sup> STOVES

EVERY HOME DESERVES A HENLEY



THE STOVE COLLECTION 2026 : VOL 1



## HENLEY STOVES

Henley Stoves is one of the fastest growing stove brands in both Ireland and the UK.

At Henley we are committed to providing quality products at affordable prices backed up with a market leading focus on customer service.

From factory floor to family home, our customers are our first priority.

We pride ourselves on using new designs, new technology and new environmentally friendly standards to ensure we are a market leader in the provision of the latest quality affordable stoves.

We service a range of customers across Ireland and the UK from our distribution centres in South West Ireland, Dublin and Cambridgeshire in the UK.

We have a range of products from traditional wood burning stoves to a wide and exclusive range of bio-ethanol stoves.

Henley has been at the heart of homes across Ireland and the UK since 1989.



Henley Stoves is also the producer of the Bertoneri Collection of Stone, Marble Surrounds & Fireplace Accessories.

Ask your local Henley Stockist about the Bertoneri Fireplace Collection Today



### Freestanding Collection

06

- |                        |                            |
|------------------------|----------------------------|
| 06 • Dunloe eco        | 15 • Druid Range           |
| 07 • Aran eco Range    | 17 • Sherwood Range        |
| 09 • Elmwood eco Range | 18 • Sherwood Double Side  |
| 10 • Burnbright        | 19 • Hazelwood Double Side |
| 11 • Willow eco        | 20 • Bracken eco           |
| 12 • Alderwood eco     | 21 • Ascot eco             |
| 13 • Ash eco           | 22 • Porto Door            |

### Insert & Cassette Collection

23

- |                   |                      |
|-------------------|----------------------|
| 23 • Rowan eco    | 27 • Elmwood eco     |
| 24 • Muckross eco | 29 • Athens Range    |
| 25 • Arklow eco   | 31 • Eco c400 / c550 |
| 26 • Achill eco   | 32 • Portimao DS     |

### Pellet Stoves Collection

34

- |                       |                      |
|-----------------------|----------------------|
| 33 • N70 - Pellet     | 38 • Thera - Pellet  |
| 34 • Elly - Pellet    | 39 • Elm 4 - Pellet  |
| 35 • Elide - Pellet   | 40 • Elm 8 - Pellet  |
| 36 • Selma - Pellet   | 41 • Elm 12 - Pellet |
| 37 • Sibilla - Pellet |                      |

### Boiler Stoves Collection

42

- |                      |                     |
|----------------------|---------------------|
| 42 • Elm 20 - Pellet | 47 • Sherwood Range |
| 43 • Achill 17.5     | 48 • Portimao 21    |
| 45 • Druid Range     |                     |

### Outdoor Stoves Collection

49

- |              |
|--------------|
| 49 • Thor 12 |
|--------------|

### European Collection

50

### Stove & Fireplace Accessories

52

- |                          |                        |
|--------------------------|------------------------|
| 52 • Natural Stone Tiles | 53 • Wood Effect Beams |
|--------------------------|------------------------|

### Stove Dimensions

54



### SIA ECO-DESIGN READY

A Henley stove with this icon is a stove which meets the future EU Standards established in 2022.



### clearSkies Levels explanation

A clearSkies label means you can be assured that the Henley stove meets all the energy and efficiency criteria, and the different levels allow you to identify how far beyond Ecodesign criteria they go in terms of reducing emissions and increasing efficiency.



Ecodesign compliant but not listed as Defra exempt.



Ecodesign compliant (e.g. previous SIA Ecodesign Ready) and Defra exempt.



15% improvement on Ecodesign; and Defra exempt.



15% improvement in emission & efficiency performance on Level 4; And Defra exempt.



### EUROPEAN STANDARD

European Standard of testing for stoves fired by solid fuel, incorporating corrigenda September 2003, June 2006 and August 2007.



### 5 YEAR WARRANTY

Henley stoves come with a 5 year warranty on the body of the stove.

### 3 YEAR WARRANTY

Henley stoves boiler stoves come with a 3 year warranty on the body of the stove.



### EXTERNAL AIR

A Henley stove has an external air facility allowing the air to come directly from outside your building rather than through a vent in the room. This is required for heat recovery systems in new build projects.



### ECO DESIGN READY 2022

All Henley Ecodesign stoves in this brochure are stamped with our Ecodesign Ready 2022 logo.



### CLEAN BURN

A Henley stove has an tertiary air system. This creates a clean-burn system where hot air is pushed into the firebox above the normal height of the fire. This allows the excess gases to combust giving a cleaner burn.



### WOOD BURNING

This icon denotes that this Henley stove uses Wood Fuel only.



### AIR-WASH

All Henley stoves come with an air-wash system which helps to keep the glass clean. It uses a specially placed vent or vents to draw in air from the outside which will wash over the front of the glass.

# eco design Ready Comparisons



## 90% LESS

Particulated emissions compared to an open fire

## 70% CHEAPER

To run than an open fire

## 60% MORE

Efficient than an open fire



## 5 Logs\*

To produce 4kWh of heat over 5 hours



\*Kiln dried hardwood

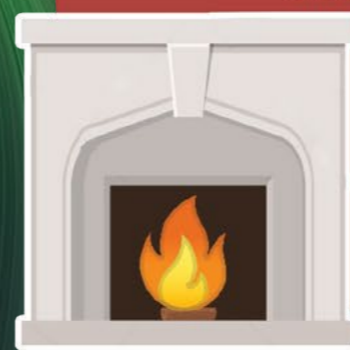


A & A+ Energy rating

## HENLEY eco design STOVE

## 16 Logs\*

To produce 4kWh of heat over 5 hours



\*Kiln dried hardwood

G Energy rating

## OPEN FIREPLACE

## 7 Logs\*

To produce 4kWh of heat over 5 hours



\*Kiln dried hardwood

B Energy rating

## 10 YEAR OLD STOVE

\*Efficiency based on a Henley Sherwood 5kW stove. Data from Stove Industry Alliance. Figures correct at the time of print - Dec 2023

Dunloe Eco 5kW - Matt Black



Aran 5kW Eco - Matt Black



# DUNLOE

## FREESTANDING

The Dunloe stove is the perfect addition to any home seeking warmth and style. With an impressive 5.1kw output and 83% efficiency rating, this stove is not only stylish but also highly functional. Its classic design with a cast iron body and door in a sleek matt black finish will add charm and character to your living space. Plus, it's energy-efficient with an A+ energy rating and can burn multiple fuel types. The air-wash feature helps to keep the glass clear for maximum viewing pleasure while also minimizing maintenance.

OUTPUT:	5.1kW
EFFICIENCY:	83%
ENERGY CLASS:	A+
FINISH AVAILABLE:	Matt Black

FEATURES

DIMENSIONS	HEIGHT	WIDTH	DEPTH	FLUE
Dunloe 5.1kW - freestanding	617	438	359	125

# ARAN

## FREESTANDING

The Henley Stoves Aran 5kW Eco multi-fuel stove has been a customer favourite since its introduction. Boasting a timeless, traditional design, it enhances any interior while delivering exceptional performance, with an impressive A+ energy rating and achieving up to 85% efficiency, it combines style, warmth, and performance seamlessly.

It is available in a variety of enamel colours. Matt Black, Enamel Black and Enamel Cream.

OUTPUT:	5.1kW
EFFICIENCY:	84.8%
ENERGY CLASS:	A+
FINISH AVAILABLE:	Matt Black Enamel Black Enamel Cream

FEATURES

DIMENSIONS	HEIGHT	WIDTH	DEPTH	FLUE
Aran 5 - freestanding	586	470	355	125



Elmwood 6.7kW Eco Design Ready



Elmwood Compact 4.9kW



# ELMWOOD

## FREESTANDING

Experience the perfect blend of classic and modern design with the new Elmwood room heater. Designed with an Eco Design, this heater boasts an impressive 4.9kW and 6,7kW heat output and high efficiencies, ensuring that your living space is always warm and cosy. The Victorian design, finished in elegant matt black, adds a touch of sophistication to any room, while the large viewing glass provides sensational fireside views. The Elmwood room heater is the perfect addition to your home.

- OUTPUT: **4.9kW, 6.7kW**
- EFFICIENCY: **4.9kW = 78.3%  
6.7kW = 78.7%**
- ENERGY CLASS: **A**
- FINISH AVAILABLE: **Matt Black**

FEATURES

DIMENSIONS	HEIGHT	WIDTH	DEPTH	FLUE
Elmwood Compact 4.9kW - freestanding	574	444	310	125
Elmwood Multifuel 6.7kW - freestanding	683	574	335	125

Burnbright Eco 6.7kW - Matt Black



Burnbright Multifuel with Logstore.

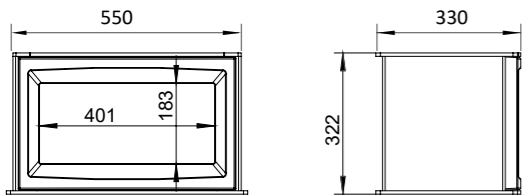
Willow Eco 6.7kW - Matt Black



# BURNBRIGHT

## FREESTANDING

The Burnbright delivers 6.7kW of heat to the room with crystal clear burn and remarkable control. Purposely designed to maximize the view of the fire, the minimal styling of the Burnbright fits comfortably into any fireside situation. The Burnbright also includes the option to add a convenient log-store feature.



\*A separate Logstore is available.

OUTPUT: 6.7kW

EFFICIENCY: 78.7%

ENERGY CLASS: A

FINISH AVAILABLE: Matt Black

FEATURES

DIMENSIONS	HEIGHT	WIDTH	DEPTH	FLUE
Burnbright Multifuel 6.7kW - freestanding	623	550	335	125
Logstore - freestanding	322	550	330	

# WILLOW

## FREESTANDING

The Willow room heater is Eco Design Ready with a 6.7kW heat output. The simplicity of the matt black finish combined with the contemporary design makes this model a popular choice for new builds.

OUTPUT: 6.7kW

EFFICIENCY: 78.7%

ENERGY CLASS: A

FINISH AVAILABLE: Matt Black

FEATURES

DIMENSIONS	HEIGHT	WIDTH	DEPTH	FLUE
Willow 6.7kW - freestanding	623	550	335	125

Alderwood Eco 6.7kW - Matt Black



Ash Eco 8.2KW - Matt Black



## ALDERWOOD

### FREESTANDING

The new Alderwood room heater is Eco Design Ready with an efficient 6.7kW heat output. A matt black finish and clean design paired with its high performance make this model a perfect choice for any fireside setting.

OUTPUT:	6.7kW
EFFICIENCY:	78.7%
ENERGY CLASS:	A
FINISH AVAILABLE:	Matt Black

FEATURES

DIMENSIONS	HEIGHT	WIDTH	DEPTH	FLUE
Alderwood 6.7kW - freestanding	623	550	335	125

## ASH

### FREESTANDING

The new Henley Stoves Ash is a stunning multi-fuel stove that combines advanced performance with a new elegant design. The powerful 8.2kW output, efficiently heats your space while maintaining an eco-friendly A rating for energy efficiency.

Its multi-fuel capability ensures versatility, making it a perfect choice for modern homes looking for both style and sustainability.

OUTPUT:	8.2kW
EFFICIENCY:	79.5%
ENERGY CLASS:	A
FINISH AVAILABLE:	Matt Black

FEATURES

DIMENSIONS	HEIGHT	WIDTH	DEPTH	FLUE
Ash 8.2kW Eco - freestanding	638	510	359	125



Druid 5 Eco- Matt Black



Druid 12 Eco - Matt Black



## DRUID

### FREESTANDING

The Druid stove combines a classic style with impressive performance. Available in three sizes, it offers heat outputs starting from 5kW and efficiencies of up to 79.5%, bringing reliable warmth and comfort to your home. Its Class A energy rating supports economical heating, while the smooth matt black finish adds a refined, contemporary look to any space. Designed as a multi-fuel stove with an external air supply, the robust cast iron door is built for longevity, and the integrated air-wash system keeps the glass clear for an uninterrupted view of the flames.

OUTPUT: 5kW, 8.2kW, 10.2kW

EFFICIENCY:  
 5kW = 77.9%  
 8.2kW = 79.5%  
 10.2kW = 76.4%

ENERGY CLASS: A

FINISH AVAILABLE: Matt Black



Druid 8.2 Eco - Matt Black

DIMENSIONS	HEIGHT	WIDTH	DEPTH	FLUE
Druid 5 - freestanding	560	382	362	125
Druid 8 - freestanding	594	490	346	125
Druid 12 - freestanding	639	540	390	153



# SHERWOOD

## FREESTANDING

The Sherwood stove is the perfect blend of style and performance. With an output of 5kW or 8.2kW and an efficiency rating of up to 79.5%, this stove delivers warmth and comfort to your home. Class A energy rating ensures efficient heating, while the clean and sleek design in a matt black finish adds an elegant touch to any room. The Sherwood stove is a multi-fuel stove with an external air connection that provides a healthier living environment. The cast iron door is durable and easy to clean, and the air-wash system ensures a clear view of the fire.

**OUTPUT:** 5kW, 8.2kW, 10.2kW

**EFFICIENCY:** 5kW = 77.9%, 8.2kW = 79.5%, 10.2kW = 76.4%

**ENERGY CLASS:** A

**FINISH AVAILABLE:** Matt Black

**FEATURES**

CE 5 YEAR CLEAN BURN ECO design Ready 2022 MULTIFUEL GRATE SIA

DIMENSIONS	HEIGHT	WIDTH	DEPTH	FLUE
Sherwood 5 - freestanding	559	382	362	125
Sherwood 8 - freestanding	585	490	350	125
Sherwood 12 - freestanding	630	540	390	153
Logstore 5 - freestanding	210	370	315	
Coming Soon Logstore 8 - freestanding	240	470	295	
Coming Soon Logstore 12 - freestanding	260	520	332	



Sherwood 10 DS - Matt Black



Hazelwood DS - Matt Black



## SHERWOOD

### FREESTANDING

The Sherwood Double Side stove is the perfect blend of style and performance. With an output of 10.2kW. The Class A energy rating ensures efficient heating, while the clean and sleek design in a matt black finish adds an elegant touch to any room. The Sherwood stove is a multi-fuel stove with an external air connection that provides a healthier living environment. The cast iron door is durable and easy to clean, and the air-wash system ensures a clear view of the fire.

OUTPUT:	10.2kW
EFFICIENCY:	76.7%
ENERGY CLASS:	A
FINISH AVAILABLE:	Matt Black

FEATURES

DIMENSIONS	HEIGHT	WIDTH	DEPTH	FLUE
Sherwood 10 DS - freestanding	630	540	557	153
Coming Soon Logstore 10DS - freestanding	260	520	470	

## HAZELWOOD

### FREESTANDING

Introducing the Hazelwood DS. These new wood-burners meet Henley's high environmental standards, ensuring a clean & efficient burn. With the Hazelwood DS, you can be safe in the knowledge that you are heating your home with, one of the most reliable & Eco-friendly stoves in our range.

OUTPUT:	6.5kW
EFFICIENCY:	75.8%
ENERGY CLASS:	A
FINISH AVAILABLE:	Matt Black

FEATURES

 \*These stoves are Wood Burning only

DIMENSIONS	HEIGHT	WIDTH	DEPTH	FLUE
Hazelwood DS 6.5kW - freestanding	530	465	500	125

Bracken Eco 7.9kW- Matt Black



# BRACKEN

## FREESTANDING

The Bracken 7.9kW multi fuel stove encompasses both traditional design and modern technology. Its double combustion system allows for great fuel efficiency along with excellent air control.

Its separate ash door allows for easy cleaning.

OUTPUT: **7.9kW**

EFFICIENCY: **76.4%**

ENERGY CLASS: **A**

FINISH AVAILABLE: **Matt Black**

FEATURES

DIMENSIONS	HEIGHT	WIDTH	DEPTH	FLUE
Bracken 7.9kW - freestanding	581	520	355	125

Ascot Eco 8kW - Matt Black



# ASCOT

## FREESTANDING

The Ascot Eco, Henley Multi Fuel Stove is the perfect fit for any classic-style home. It features a 8kW output with multifuel grate so you can easily switch up your fuel choice. With a remarkable up to 80% efficiency rate, it's sure to keep your home toasty through the cooler months. The air-wash keeps the glass clean and clear, giving you the perfect view of the blazing fire. The freestanding design makes it easy to place in any room, and the External Air allows for an efficient and healthy heating system.

OUTPUT: **8kW**

EFFICIENCY: **79.4%**

ENERGY CLASS: **A**

FINISH AVAILABLE: **Matt Black**

FEATURES

DIMENSIONS	HEIGHT	WIDTH	DEPTH	FLUE
Ascot 8 - freestanding	550	490	318	125

Porto Stove Door - Matt Black



## PORTO DOOR

### DIY STOVE DOOR

The Porto stove door is a DIY door which can be added to your standard fireplace to help ensure you get the maximum efficiencies from your current fireplace without the need to install a room heater stove. The Porto stove door allows you to control the burn rate of your open fire and has to be used in conjunction with your current back boiler increasing the output of your back boiler. With the Henley Porto stove door you can be rest assured all the heat from your fire is being used efficiently.

Suitable for 16" or 18" openings

FINISH AVAILABLE:

Matt Black

FEATURES



DIMENSIONS	HEIGHT	WIDTH			
Porto Door	620	525			

Rowan Eco - Matt Black



## ROWAN

### INSERT

The Rowan insert stove is a stylish and efficient heating solution designed to elevate your home. Crafted for versatility, the Rowan is a multi-fuel stove boasting an impressive 79.2% efficiency rating, helping you stay warm while saving on fuel. The Rowan is also environmentally friendly and eco-design compliant. The air-wash system ensures that the large viewing glass stays clean and clear. Designed to fit most standard fireplace openings, the Rowan combines practicality with timeless elegance. The robust cast iron door adds a touch of classic charm while ensuring long-lasting durability.

OUTPUT:

4.6kW to 5kW

EFFICIENCY:

79.2%

ENERGY CLASS:

A+

FINISH AVAILABLE:

Matt Black

FEATURES



DIMENSIONS	HEIGHT	WIDTH	DEPTH	FLUE	BACKBOX HEIGHT	BACKBOX WIDTH	BACKBOX DEPTH
Rowan - insert	593	485	376	125	512	396	263

Muckross Eco - Matt Black



Arklow Eco - Enamel Black



# MUCKROSS

## INSERT

The Muckross insert multi-fuel stove boasts an impressive 83.3% efficiency rating and is eco-design compliant. The air-wash system keeps the glass clear for an uninterrupted view of the flames, while its insert design allows it to fit most standard fireplace openings. The cast iron door adds both durability and elegance to this stove.

- OUTPUT: **4.6kW to 5kW**
- EFFICIENCY: **83.3%**
- ENERGY CLASS: **A+**
- FINISH AVAILABLE:
  - Matt Black
  - Enamel Black
  - Enamel Cream

FEATURES

DIMENSIONS	HEIGHT	WIDTH	DEPTH	FLUE	BACKBOX HEIGHT	BACKBOX WIDTH	BACKBOX DEPTH
Muckross - insert	595	485	370	125	512	396	283

# ARKLOW

## INSERT

The Arklow insert stove by Henley Stove is the perfect heating solution for your home. It's a multi-fuel stove with an impressive 79.2% efficiency rating. The Arklow is also environmentally friendly and eco-design compliant. The air-wash system ensures that the large viewing glass stays clean and clear. The Arklow stove fits most standard fireplace openings. The cast iron door ensures durability and elegance.

- OUTPUT: **4.6kW to 5kW**
- EFFICIENCY: **79.2%**
- ENERGY CLASS: **A+**
- FINISH AVAILABLE:
  - Matt Black
  - Enamel Black

FEATURES

Suitable for use with most timber surrounds.

DIMENSIONS	HEIGHT	WIDTH	DEPTH	FLUE	BACKBOX HEIGHT	BACKBOX WIDTH	BACKBOX DEPTH
Arklow - insert	591	485	370	125	512	396	263

Achill Eco 7kW - Matt Black



Elmwood Eco 7kW Insert - Matt Black



## ACHILL

### INSERT

The Achill insert multi-fuel stove, a remarkably efficient and eco-conscious addition to your home. With an impressive 80.2% efficiency rating, the Achill meets stringent eco-design standards, ensuring minimal environmental impact while providing exceptional heating performance. Its air-wash system effectively keeps the glass door clear, offering an unobstructed view of the dancing flames. The insert design seamlessly integrates into most standard fireplace openings, while the cast iron door exudes both durability and timeless elegance.

- OUTPUT: **7kW**
- EFFICIENCY: **80.2%**
- ENERGY CLASS: **A+**
- FINISH AVAILABLE: **Matt Black** and **Enamel Black**

FEATURES

DIMENSIONS	HEIGHT	WIDTH	DEPTH	FLUE	BACKBOX HEIGHT	BACKBOX WIDTH	BACKBOX DEPTH
Achill Eco - insert	595	485	430	125	552	396	370

## ELMWOOD

### INSERT

The Elmwood insert multi-fuel stove is a highly efficient, eco-friendly, and stylish stove that is perfect for heating your home. It has an impressive 80.2% efficiency rating and is eco-design compliant. Its air-wash system effectively keeps the glass door clear, offering an unobstructed view of the dancing flames. The insert design seamlessly integrates into most standard fireplace openings, while the cast iron door exudes both durability and timeless elegance.

- OUTPUT: **7kW**
- EFFICIENCY: **80.2%**
- ENERGY CLASS: **A+**
- FINISH AVAILABLE: **Matt Black**

FEATURES

Suitable for use with most timber surrounds.

DIMENSIONS	HEIGHT	WIDTH	DEPTH	FLUE	BACKBOX HEIGHT	BACKBOX WIDTH	BACKBOX DEPTH
Elmwood Eco - insert	594	540	430	125	552	396	370

Athens 400 - Black Glass



# ATHENS

## CASSETTE

The Athens 400, 500 multifuel Cassette Stoves are manufactured with beautiful steel construction & boast excellent burn control along with an 81% plus efficiency level. Sleek, modern design and a large viewing glass that is sure to turn heads in any home.

For proper functionality, this stove must be installed with external air.

The Athens Range comes as standard with a 4 Sided Glass Frame. A 3 sided frame is also available to order.

OUTPUT:	4.8kW, 6.2kW
EFFICIENCY:	4.8kW = 80.8% 6.2kW = 75.0%
ENERGY CLASS:	4.8kW A+ 6.2kW A
FINISH AVAILABLE:	Black Glass

### FEATURES



DIMENSIONS	HEIGHT	WIDTH	FLUE	BACKBOX HEIGHT	BACKBOX WIDTH
Athens 400 / 4.8kW - cassette	626	468	151	550	395
Athens 500 / 6.2kW - cassette	630	577	151	555	500



Athens 500 - Black Glass

Eco C550 - Matt Black



## ECO C400 & C550

### CASSETTE

The ECO C400 & C550 multifuel cassette is popular stove in the Henley collection. It boasts an excellent burn control along with an 82.2% plus efficiency level.

This model has a cover fitted to the back of the stove and will work as standard taking air from the room. If you require the stove to work with external air supply please remove the cover and fit the external air kit.

The Eco C. Range comes as standard with a 4 Sided Frame. A 3 sided frame is also available to order.

Optional Black Handle : Available to order

OUTPUT:

5kW, 6.9kW

EFFICIENCY:

5kW = 82.2%  
6.9kW = 75.8%

ENERGY CLASS:

5kW A+

6.9kW A

FINISH AVAILABLE:

Matt Black

FEATURES



DIMENSIONS	HEIGHT	WIDTH	FLUE	BACKBOX HEIGHT	BACKBOX WIDTH
ECO C400 / 5kW - cassette	663	512	125	552	400
ECO C550 / 6.9kW - cassette	594	663	125	482	550



Eco C400 - Matt Black

Portimao 900DS - Black



EXTERNAL AIR

MULTIFUEL GRATE

## PORTIMAO

### CASSETTE

The Portimao models are a range of Wood Burning Cassette Stoves manufactured in southern Portugal from steel and boast excellent burn control along with an 80% plus efficiency level. Their sleek modern design and large viewing window allows this stove to be the focal point of any home.

For proper functionality, this stove must be installed with external air.

OUTPUT:	8.0kW
EFFICIENCY:	77.0%
ENERGY CLASS:	A
FINISH AVAILABLE:	Matt Black

#### FEATURES



DIMENSIONS	HEIGHT	WIDTH	FLUE	BACKBOX HEIGHT	BACKBOX WIDTH
Portimao 900 DS / 8kW - cassette	615	955	151	545	896

N70 Pellet Stove - Black



EXTERNAL AIR

## N70

### PELLET STOVE

#### Special features include:

- Reinforced steel structure
- Cast iron stove front and top
- Self cleaning brazier
- Removable ash drawer
- Painted steel side panels
- 15kg pellet storage capacity
- Automatic combustion control system
- Optional Wi-Fi Control kit enabling full remote control

OUTPUTS:	3kW - 7kW
	3kW - 9KW
EFFICIENCY:	92.8%
ENERGY CLASS:	A++
FINISH AVAILABLE:	Black

#### FEATURES



DIMENSIONS	HEIGHT	WIDTH	DEPTH	FLUE
N70 - freestanding	1000	440	450	80

Elly Pellet Stove - Bronze

Elide Pellet Stove - Black



# ELLY

## PELLET STOVE

### Special features include:

- Reinforced steel structure
- Cast iron brazier and stove top
- Painted steel covering
- 15L pellet storage capacity
- Air Off Feature allows the stove to operate with the ambient fan turned off, providing heat diffusion through natural heat radiation if desired.
- Darwin System precisely regulates airflow to ensure consistent combustion under all conditions
- Pellet Control instantly checks pellet-levels via display or smartphone app to help plan refills
- Wi-Fi Control for remote temperature and ventilation management via Smartphone App

OUTPUT:	2.5kW - 6kW
EFFICIENCY:	94%
ENERGY CLASS:	A+
FINISH AVAILABLE:	<input checked="" type="radio"/> Black <input type="radio"/> Bronze

FEATURES

DIMENSIONS	HEIGHT	WIDTH	DEPTH	FLUE
Elly - freestanding	770	520	550	80

# ELIDE

## PELLET STOVE

### Special features include:

- Reinforced steel structure
- Cast iron brazier and stove top
- Painted steel covering
- 31L pellet storage capacity
- Quiet Feature allows low-noise heating even at maximum power.
- VIP Fire system uses gasification and pyrolysis for high output, low emissions, and minimal ash
- Darwin System precisely regulates airflow to ensure consistent combustion under all conditions,
- Pellet Control instantly checks pellet-levels via display or smartphone app to help plan refills
- Wi-Fi Control for remote temperature and ventilation management via Smartphone App

OUTPUTS:	2.5kW - 7kW 2.5kW - 9KW
EFFICIENCY:	91.5%
ENERGY CLASS:	A+
FINISH AVAILABLE:	<input checked="" type="radio"/> Black

FEATURES

DIMENSIONS	HEIGHT	WIDTH	DEPTH	FLUE
Elide - freestanding	1080	510	510	80

Selma Pellet Stove - Black



Sibilla Pellet Stove - Black



# SELMA

## PELLET STOVE

### Special features include:

- Reinforced steel structure
- Cast iron brazier and stove top
- Painted steel covering
- 15L pellet storage capacity
- Quiet Feature allows low-noise heating even at maximum power.
- VIP Fire system uses gasification and pyrolysis for high output, low emissions, and minimal ash
- Darwin System precisely regulates airflow to ensure consistent combustion under all conditions,
- Pellet Control instantly checks pellet-levels via display or smartphone app to help plan refills
- Wi-Fi Control for remote temperature and ventilation management via Smartphone App

OUTPUT:	3.3kW -8kW
EFFICIENCY:	94%
ENERGY CLASS:	A+
FINISH AVAILABLE:	Black

FEATURES

DIMENSIONS	HEIGHT	WIDTH	DEPTH	FLUE
Selma - freestanding	870	520	570	80

# SIBILLA

## PELLET STOVE

### Special features include:

- Reinforced steel structure
- Cast iron brazier and stove top
- Painted steel covering
- 44L pellet storage capacity
- Quiet Feature allows low-noise heating even at maximum power.
- VIP Fire system uses gasification and pyrolysis for high output, low emissions, and minimal ash
- Darwin System precisely regulates airflow to ensure consistent combustion under all conditions,
- Pellet Control instantly checks pellet-levels via display or smartphone app to help plan refills
- Wi-Fi Control for remote temperature and ventilation management via Smartphone App

OUTPUTS:	2.5kW - 7kW
	2.5kW - 9KW
EFFICIENCY:	91.5%
ENERGY CLASS:	A+
FINISH AVAILABLE:	Black

FEATURES

DIMENSIONS	HEIGHT	WIDTH	DEPTH	FLUE
Sibilla - freestanding	1190	560	560	80

Thera Pellet Stove - Black



Elm 4 Pellet Stove - Black



# THERA

## PELLET STOVE

### Special features include:

- Reinforced steel structure
- Cast iron brazier and stove top
- Painted steel covering
- 31L pellet storage capacity
- Quiet Feature allows low-noise heating even at maximum power.
- VIP Fire system uses gasification and pyrolysis for high output, low emissions, and minimal ash
- Darwin System precisely regulates airflow to ensure consistent combustion under all conditions,
- Pellet Control instantly checks pellet-levels via display or smartphone app to help plan refills
- Wi-Fi Control for remote temperature and ventilation management via Smartphone App

**OUTPUTS:** 2.5kW - 7kW  
2.5kW - 9kW

**EFFICIENCY:** 91.5%

**ENERGY CLASS:** A+

**FINISH AVAILABLE:** Black, Bronze

**FEATURES**

DIMENSIONS	HEIGHT	WIDTH	DEPTH	FLUE
Thera - freestanding	1150	560	540	80

# ELM 4

## PELLET STOVE

### Special features include:

- Reinforced steel structure
- Cast iron brazier
- Removable burner bowl & ashtray
- Painted steel covering
- 4kg storage container for 4 to 13 hours of operating time without refilling
- Enhanced thermal exchanger
- 5 combustion levels and 5 ventilation speeds
- Daily time settings
- Operation via control panel with display or conveniently via remote control
- Remote access control via Smartphone App using home Wi-Fi (optional)

**OUTPUT:** 4kW

**EFFICIENCY:** 90%

**ENERGY CLASS:** A+

**FINISH AVAILABLE:** Black, Red, Cream

**FEATURES**

\*Optional Wi-Fi Kit available.

DIMENSIONS	HEIGHT	WIDTH	DEPTH	FLUE
Elm 4 - freestanding	610	385	430	80



Red



Black



# ELM 8

## PELLET STOVE

### Special features include:

- Reinforced steel structure
- Cast iron brazier
- Removable burner bowl & ashtray
- Painted steel covering
- 18 kg storage container for 6 to 28 hours of operating time without refilling
- Enhanced thermal exchanger
- 5 combustion levels and 5 ventilation speeds
- Daily time settings
- Operation via control panel with display or conveniently via remote control
- Remote access control via Smartphone App using home Wi-Fi (optional)

OUTPUT:	8kW
EFFICIENCY:	90.0%
ENERGY CLASS:	A+
FINISH AVAILABLE:	<input checked="" type="radio"/> Black <input type="radio"/> Red <input type="radio"/> Cream

FEATURES

\*Optional Wi-Fi Kit available.

DIMENSIONS	HEIGHT	WIDTH	DEPTH	FLUE
Elm 8 - freestanding	909	435	460	80



Elm 12 Pellet Stove - Red

# ELM 12

## PELLET STOVE

### Special features include:

- Reinforced steel structure
- Cast iron brazier
- Removable burner bowl & ashtray
- Painted steel covering
- 30kg storage container for 6 to 32 hours of operating time without refilling
- Enhanced thermal exchanger
- 5 combustion levels and 5 ventilation speeds
- Daily time settings
- Operation via control panel with display or conveniently via remote control
- Remote access control via Smartphone App using home Wi-Fi (optional)

OUTPUT:	12kW
EFFICIENCY:	90%
ENERGY CLASS:	A+
FINISH AVAILABLE:	<input checked="" type="radio"/> Black <input type="radio"/> Red <input type="radio"/> Cream

FEATURES

\*Optional Wi-Fi Kit available.

DIMENSIONS	HEIGHT	WIDTH	DEPTH	FLUE
Elm 12 - freestanding	1054.5	534	576	80



Black



Elm 20 Pellet Stove - Red



Achill 17.5 Eco - Matt Black



# ELM 20

## PELLET BOILER STOVE

# ACHILL 17.5

## BOILER - INSERT

**Special features include:**

- Reinforced steel structure
- Cast iron brazier
- Removable burner bowl & ashtray
- Painted steel covering
- 25 kg storage container for 6 to 31 hours of operating time without refilling
- Enhanced thermal exchanger
- 22L Boiler Capacity
- 5 combustion levels and 5 ventilation speeds
- Daily time settings
- Operation via control panel with display or conveniently via remote control
- Remote access control via Smartphone App using home Wi-Fi (optional)

OUTPUT ROOM:	3.2kW
OUTPUT WATER:	16.8kW
EFFICIENCY:	89.5%
ENERGY CLASS:	A+
FINISH AVAILABLE:	Black
	Red
	Cream

**FEATURES**

\*Optional Wi-Fi Kit available.

DIMENSIONS	HEIGHT	WIDTH	DEPTH	FLUE	
Elm 20kW pellet boiler - freestanding	1043	534	590	80	

The Achill 17.5 stove is a multi fuel eco boiler insert, delivering warmth and comfort to your home. It is primarily designed to heat water to radiators.

We would strongly recommend that a radiator is fitted in the room where the stove is installed, to maximize heat output to the area. If you feel the heat output to the room is too high, turn off radiator for that room.

OUTPUT ROOM:	2kW to 6.1kW
OUTPUT WATER:	4.1kW to 11.5kW max
EFFICIENCY:	83.2%
ENERGY CLASS:	A+
FINISH AVAILABLE:	Matt Black

**FEATURES**

\*A Boiler's heat output to the room in which it is fitted can vary depending on how many radiators are utilised.

DIMENSIONS	HEIGHT	WIDTH	FLUE	BACKBOX HEIGHT	BACKBOX WIDTH
Achill 17.5 Eco Boiler - insert	634	626	151	525	529



Druid 12kW Eco Boiler



Druid 21kW Eco Boiler

## DRUID

## BOILER - FREESTANDING

The Druid Boiler stove seamlessly combines style and functionality, with new boiler options ranging from 12kW to 21kW.

Class A+ energy rating ensures efficient heating, while the clean and sleek design in a matt black finish adds an elegant touch to any room.

Designed for versatility, the Druid stove is a multi-fuel appliance featuring an external air connection, offering a warm and more comfortable living environment.

12KW	OUTPUT ROOM:	4.0kW to 5.0kW max
	OUTPUT WATER:	3.8kW to 7.0kW max
21KW	OUTPUT ROOM:	8.1kW to 8.1kW max
	OUTPUT WATER:	4.7kW to 13.0kW max
EFFICIENCY:		12kW = 80.2% 21kW = 80.1%
ENERGY CLASS:		12kW A+ 21kW A

### FEATURES



\*A Boiler's heat output to the room in which it is fitted can vary depending on how many radiators are utilised.

DIMENSIONS	HEIGHT	WIDTH	DEPTH	FLUE	
Druid 12 Boiler - freestanding	639	540	441	151	
Druid 21 Boiler - freestanding	690	630	555	151	



# SHERWOOD

## BOILER - FREESTANDING

The Sherwood Boiler stove is the perfect blend of style and performance with new boiler options ranging from 12kW to 21kW.

Class A+ energy rating ensures efficient heating, while the clean and sleek design in a matt black finish adds an elegant touch to any room. The Sherwood stove is a multi-fuel stove with an external air connection that provides a healthier living environment.

The cast iron door is durable and easy to clean, and the air-wash system ensures a clear view of the fire.

12KW	OUTPUT ROOM:	4.0kW to 5.0kW max
	OUTPUT WATER:	3.8kW to 7.0kW max
21KW	OUTPUT ROOM:	8.1kW to 8.1kW max
	OUTPUT WATER:	4.7kW to 13.0kW max
EFFICIENCY:		12kW = 80.2% 21kW = 80.1%
ENERGY CLASS:		12kW A+ 21kW A

FEATURES

\*A Boiler's heat output to the room in which it is fitted can vary depending on how many radiators are utilised.

DIMENSIONS	HEIGHT	WIDTH	DEPTH	FLUE	
Sherwood 12 Boiler - freestanding	630	540	455	151	
Sherwood 21 Boiler - freestanding	660	630	556	151	

Portimao 21 Boiler - Black



# PORTIMAO 21

## BOILER - CASSETTE

The Portimao models are a range of Wood Burning Cassette Stoves manufactured in southern Portugal from steel and boast excellent burn control along with an 85% plus efficiency level. Their sleek modern design and large viewing window allows this stove to be the focal point of any home.

For proper functionality, this stove must be installed with external air.

- OUTPUT ROOM: 6.0kW to 7 kW max
- OUTPUT WATER: 10.8kW to 14 kW max
- EFFICIENCY: 85.0%
- ENERGY CLASS: A+
- FINISH AVAILABLE: Matt Black

FEATURES



\*A Boiler's heat output to the room in which it is fitted can vary depending on how many radiators are utilised.

DIMENSIONS	HEIGHT	WIDTH	DEPTH	FLUE	BACKBOX HEIGHT
Portimao 21kW Boiler - cassette	553	697	535	194	950

\*\*Note: Please request drawings before fitting.

Thor 12 - Corten Steel



# THOR 12

## OUTDOOR STOVE

The Thor 12kW stove is an outdoor wood stove with elegant and sophisticated look. Its cube shape is complemented by a distinctive modular design featuring 4 glass panels. You can choose a version with a steel floor plate, handy for storing firewood.

- OUTPUT: 12kW
- FINISH AVAILABLE: Corten Steel



THOR 12



THOR 12 WITH STEEL FLOOR PLATE BASE

\*These stoves are Wood Burning only

DIMENSIONS	HEIGHT	WIDTH	DEPTH		
Thor 12kW	900	530	530		
Thor 12kW With Steel Floor Plate Base	900	530	530		

## GENEVA

Size:	470 x 497 x 1001 mm
Output:	5kW
Efficiency:	78%
Fuel:	Multi Fuel
Flue:	150mm
Colour:	Matt Black



## ELIPSE G5

Size:	500 x 415 x 1040 mm
Output:	7.3kW
Efficiency:	78%
Fuel:	Wood
Flue:	150mm
Colour:	Matt Black



Geneva Logstore



Geneva Pedestal



Elipse G5



Elipse G5 Pedestal

## SALZBURY

Size:	530 x 367 x 988 mm
Output:	6.2kW
Efficiency:	81%
Fuel:	Wood
Flue:	150mm
Colour:	Matt Black



## ELIPSE G6

Size:	500 x 415 x 1160 mm
Output:	7.3kW
Efficiency:	78%
Fuel:	Wood
Flue:	150mm
Colour:	White

## Natural Stone Tiles

Bring the charm of the outdoors into your home with our natural stone tiles. A distinctive and popular choice to incorporate into both contemporary & traditional design projects. Choose from our range of 4 styles of stone tiles to create a superior natural feature for your home.



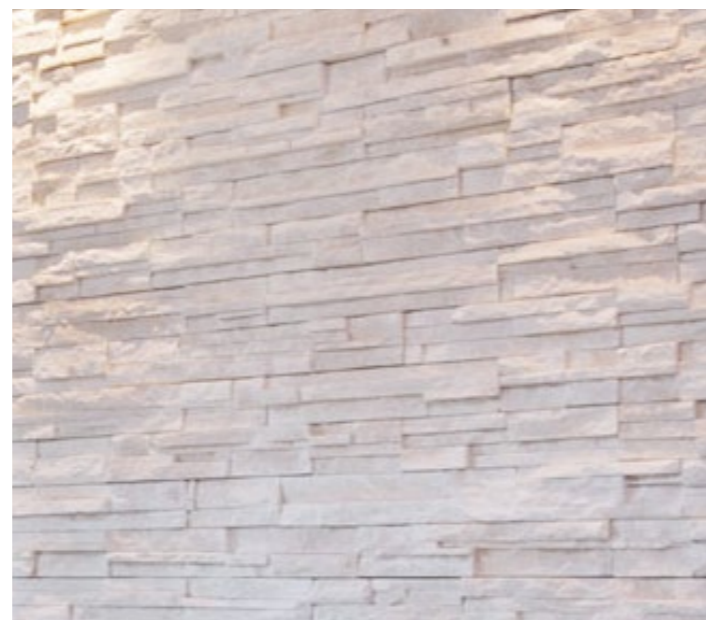
OYSTER SLATE VS-01



MULTICOLOUR SLATE VS-02



BLACK GRANITE VS-03



WHITE QUARTZ VS-04

## Wood Effect Beams

Our wood-effect beams are manufactured from a non-combustible material & finished with a water-based stain. Currently available in 2 charming shades of oak. These designs are perfect for any interior design project.

Available in: 1220mm x 150mm x 150mm  
Available in: 1372mm x 150mm x 150mm



ARIZONA OAK



ARIZONA OAK LIGHT

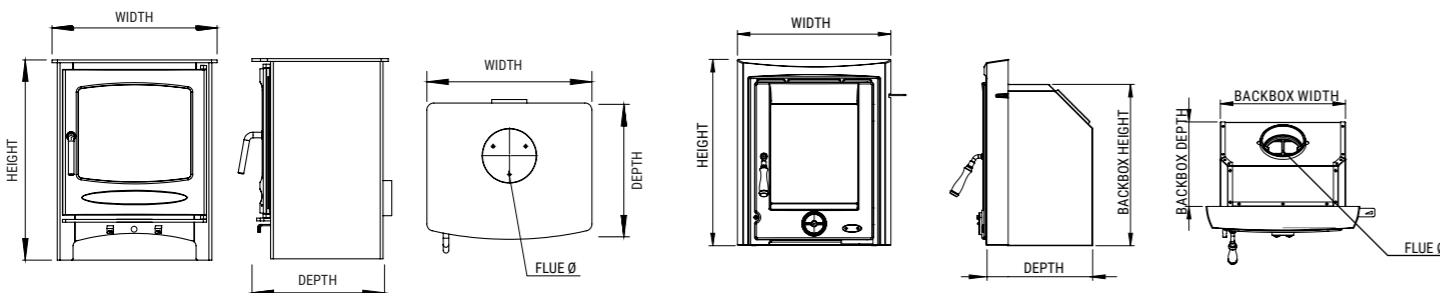
DIMENSIONS: ROOM HEATERS

	HEIGHT	WIDTH	DEPTH	FLUE			
ARAN 5KW	586mm	470mm	355mm	125mm	-	-	-
ASCOT 5KW	550mm	420mm	318mm	125mm	-	-	-
ASCOT 8KW	550mm	490mm	318mm	125mm	-	-	-
ASH 8.2KW	638mm	510mm	359mm	125mm	-	-	-
ALDERWOOD 6.7KW	623mm	550mm	335mm	125mm	-	-	-
BRACKEN 7.9KW	581mm	520mm	355mm	125mm	-	-	-
BURNBRIGHT 5KW	623mm	550mm	335mm	125mm	-	-	-
DRUID 5KW ECO	560mm	382mm	362mm	125mm	-	-	-
DRUID 8KW ECO	594mm	490mm	346mm	125mm	-	-	-
DRUID 12KW ECO	639mm	540mm	390mm	153mm	-	-	-
DUNLOE 5.1KW	617mm	438mm	359mm	125mm	-	-	-
ELMWOOD 6.7KW	683mm	574mm	335mm	125mm	-	-	-
ELMWOOD COMPACT 4.9KW	574mm	444mm	310mm	125mm	-	-	-
HAZELWOOD 6.5KW DS	530mm	465mm	500mm	125mm	-	-	-
SHERWOOD 5KW	559mm	382mm	362mm	125mm	-	-	-
SHERWOOD 8KW	585mm	490mm	350mm	125mm	-	-	-
SHERWOOD 10KW DS	630mm	540mm	557mm	153mm	-	-	-
SHERWOOD 12KW	630mm	540mm	390mm	153mm	-	-	-
THAMES 5.1KW	495mm	430mm	339mm	125mm	-	-	-
WILLOW 6.7KW	623mm	550mm	335mm	125mm	-	-	-
PORTO DOOR	620mm	525mm	-	-	-	-	-

LOGSTORE

	HEIGHT	WIDTH	DEPTH				
BURNBRIGHT	322mm	550mm	330mm	-	-	-	-
SHERWOOD 5	210mm	370mm	315mm	-	-	-	-
SHERWOOD 8 <i>Coming Soon</i>	240mm	40mm	295mm	-	-	-	-
SHERWOOD 12 <i>Coming Soon</i>	260	520	295	-	-	-	-
SHERWOOD 10DS <i>Coming Soon</i>	260	520	470	-	-	-	-

DIMENSIONS: STOVE EXAMPLES



DIMENSIONS: INSERT & CASSETTE\*

** Size given with Frame Included	HEIGHT	WIDTH	FLUE		BACKBOX HEIGHT	BACKBOX WIDTH	BACKBOX DEPTH
MUCKROSS - INSERT	595mm	485mm	125mm		512mm	396mm	283mm
ARKLOW - INSERT	591mm	485mm	125mm		512mm	396mm	263mm
ROWAN ECO - INSERT	593mm	485mm	125mm		512mm	396mm	263mm
ELMWOOD ECO - INSERT	594mm	540mm	125mm		552mm	396mm	370mm
ACHILL ECO - INSERT	595mm	485mm	125mm		552mm	396mm	370mm
** Size given with Frame Included							
ECO C400	**663mm	**512mm	125mm		552mm	400mm	342mm
ECO C550	**593mm	**662mm	125mm		482mm	550mm	342mm
ATHENS 400	**626mm	**468mm	151mm		550mm	395mm	350mm
ATHENS 500	**630mm	**577mm	151mm		555mm	500mm	350mm
PORTIMAO 900 DS	**615mm	**955mm	151mm		545mm	896mm	527mm

DIMENSIONS: PELLET STOVES

	HEIGHT	WIDTH	DEPTH	FLUE			
N70 - FREESTANDING	1000mm	440mm	450mm	80mm	-	-	-
ELLY - FREESTANDING	770mm	520mm	550mm	80mm	-	-	-
ELIDE - FREESTANDING	1180mm	560mm	560mm	80mm	-	-	-
SELMA- FREESTANDING	870mm	520mm	570mm	80mm	-	-	-
SIBILLA - FREESTANDING	1190mm	560mm	560mm	80mm	-	-	-
THERA - FREESTANDING	1150mm	560mm	540mm	80mm	-	-	-
ELM 4KW - FREESTANDING	610mm	385mm	430mm	80mm	-	-	-
ELM 8KW - FREESTANDING	909mm	435mm	460mm	80mm	-	-	-
ELM 12KW - FREESTANDING	1054.5mm	534mm	576mm	80mm	-	-	-

DIMENSIONS: BOILER STOVES

	HEIGHT	WIDTH	DEPTH	FLUE	BACKBOX HEIGHT	BACKBOX WIDTH	BACKBOX DEPTH
ELM 20KW PELLET BOILER	1043mm	534mm	590mm	80mm	-	-	-
ACHILL 17.5 BOILER	634mm	626mm	475mm	151mm	525mm	529mm	360mm
PORTIMAO 21KW BOILER	553mm	697mm	535mm	194mm	950mm	-	535mm
SHERWOOD 12 BOILER	630mm	540mm	455mm	151mm	-	-	-
SHERWOOD 21 BOILER	660mm	630mm	556mm	151mm	-	-	-
DRUID 12 BOILER	639mm	540mm	441mm	151mm	-	-	-
DRUID 21 BOILER	690mm	630mm	555mm	151mm	-	-	-

DIMENSIONS: OUTDOOR STOVES

	HEIGHT	WIDTH	DEPTH				
THOR D12 OUTDOOR WL	900mm	530mm	530mm	-	-	-	-
THOR D12 OUTDOOR WB	900mm	530mm	530mm	-	-	-	-

\* Please note: all cassette stove dimensions include frame unless stated otherwise. \*\* Measurement excludes frame. All dimensions are correct at time of print, but may be subject to change. Please confirm exact measurements before commencing any installation works.

\* Please note: all cassette stove dimensions include frame unless stated otherwise. \*\* Measurement excludes frame. All dimensions are correct at time of print, but may be subject to change. Please confirm exact measurements before commencing any installation works.

SCAN ME  
& VIEW OUR ONLINE  
BROCHURES



EVERY HOME DESERVES A HENLEY

**HENLEY**  
**STOVES**

**Address:** Curraheen, Tralee, Co. Kerry, Ireland

**Henley Stoves UK:** Master Logistics, Ely Rd,  
Stretham, Ely CB6 3JJ

[www.henleystoves.com](http://www.henleystoves.com), [sales@henleystoves.com](mailto:sales@henleystoves.com)  
© 2026 Henley Stoves All Rights Reserved

Local Stockist: